



Glasgow MCMC Partnership

Summary Report

2010- 2011

Introduction

The overarching aim of Glasgow's MCMC Partnership is to:

- ◆ reduce the number of Glasgow's young people aged 16-19 not in Education Employment or Training
- ◆ ensure that all young people have the necessary supports and offers of appropriate learning opportunities to allow them to remain in learning beyond the compulsory education stage.

The Partnership Objectives are:

- ◆ **Data Sharing** - to ensure the employment of consistent data-sharing practice across all relevant partners in Glasgow.
- ◆ **Early Identification** - To identify those at risk; the nature of the risk; and the agencies/key workers best placed to work with individuals
- ◆ **Provision** - To Identify and/or develop appropriate and effective interventions and activities which will enable young people to move closer to the labour market.
- ◆ **Transitions** – To ensure the provision of flexible and effective supports for transition onto suitable employment, education, training or First Step activities
- ◆ **Retention and progression** – To ensure that young people are supported to develop their full potential once they have successfully engaged in education, employment or training
- ◆ **Employer Engagement:** -To ensure that MCMC service developments and priorities reflect identified employer needs, skills gaps and local labour market information
- ◆ **Monitoring and Reporting Progress** – To incorporate reflective practice and formal reporting mechanisms to evaluate the effectiveness of the Partnership and city-wide YEG Structures and Strategies.

The Key Target Groups for the Partnership are:

1. 15-16 year olds reaching their school leaving date at risk of not making a successful transition from school (NEET Prevention)
2. 16-19 year olds who are not in education, employment or training (NEET Reduction)
3. Young people aged 15-19 who are in, and leaving, local authority care
4. Young people aged 15-19 making the transition from 'Special Schools'

The aims, focus and targets set by Glasgow's MCMC Partnership contribute directly to Glasgow's Single Outcome Agreement and the associated Scottish Government National Performance Framework

Scottish Government - National Outcome 3

- We are better educated, more skilled and more successful, renowned for our research and innovation

Scottish Government - National Indicator and Targets

- Increase the proportion of school leavers (from publicly funded schools) in positive and sustained destinations (FE, HE, employment and training)

This MCMC Partnership Summary Report aims to:

- ◆ provide a mechanism for reporting on progress to-date
- ◆ measure the impact of the range of activities which Glasgow has in place
- ◆ provide a basis for future strategic planning and partnership working

Section 1: Statistical Analysis

Table 1
Impact Indicators Highlights key impact indicators which articulate with the SOA, and the progress towards agreed targets

Table 2
Interventions and Initiatives Provides a top-level summary of the range of interventions and initiatives which are supporting the MCMC agenda, and their outcomes

Table 3
Statistical Trends – SLDR Provides the Glasgow and Scottish School Leaver Destination Statistics for the past 4 years

Table 4
16-19 Year olds, quarterly JSA claimants Analyses the trends in 16-19 Year old Job Seeker Allowance Claimants for each part of Glasgow

Section 2: MCMC Partnership Action Plan

This top-level plan summarises the Partnership Objectives, showing how agencies and the identified actions contribute to different aspects of the MCMC agenda.

Section 1

Table1: Impact Indicators

Indicator	Baseline	Target	Current position	Source	Commentary
Number of Key Benefit Claimants (16-19 year old JSA Claimants)	2065 (May 2006)	1700* by May 2010 1635* by May 2011 (*Proportion of generic target)	2240 (May 10) 1995 (Jan 11)	DWP / NOMIS Monthly Claimant Count	From SOA: (Indicator 2.7) <i>Note on calculation of target provided below table</i>
Proportion of young people going to higher education, further education, training or employment	83.1% (2006/07 SLDR)	87% by 2010/11	84.1% (2009/10 SLDR)	SDS Annual SLDR Report	From SOA (Indicator 3.8) Note: Glasgow percentage excludes Jordanhill School
Proportion of Looked After and Looked After and Accommodated young people leaving care service who are known to be in employment, education or training	32% (06/07)	Increase by 2% each year 38% 2009-10 40% 2010 -11	16% (09-10)	GCC/SDS	From SOA (Indicator 7.24)
Leavers from 'Special Schools' in positive destinations	64% (09-10)	Improve by 2% each year	64% (09-10)	GCC/SDS	Target set by Glasgow MCMC Partnership

*The targets for 16-19 year old JSA Claimants have been extrapolated from Glasgow's universal Benefit Claimant target (SOA 2.7) I.E.

- 'Reduce number of Key Benefit Claimants to 72,387 by May 2010 and 69,538 by May 2011 from a baseline (May 06) of 88,265;
- All age JSA claimants from May 06 baseline = 16,060 (18.2%);
- Proportionately, the all-age JSA targets for May 10 and May 11 respectively are therefore: 13,174 and 12,655;
- The 16-19 year old JSA claimant figure from the baseline reporting period (May 06) = 2065 (12.9%)
- Proportionately, the 16-19 year old JSA targets for May 10 and May 11 respectively are therefore: 1,699 and 1633 (then rounded to nearest 5)

Section 1

Table 2: Interventions and Initiatives

Intervention/Initiative	Numbers Engaged	Quantitative Measures	Current Figures	Commentary
Activity Agreement Coaches	565	<ul style="list-style-type: none"> Positive destinations 	<ul style="list-style-type: none"> 500 Activity Agreements 278 Positive destinations 	April 10 – March 11
Care Leavers Employability Service (CLES)	115	<ul style="list-style-type: none"> Into work Into FE/HE Into training Into voluntary work Core skills training 	<ul style="list-style-type: none"> 29 22 9 9 38 	Sept 09 to Aug 10
Community Initiative to Reduce Violence (CIRV)		<ul style="list-style-type: none"> 	<ul style="list-style-type: none"> 	
Commonwealth Apprenticeships	3237	<ul style="list-style-type: none"> Into work 	<ul style="list-style-type: none"> 1369 	2009 & 2010 candidates
Commonwealth Jobs Fund	(target 1000 job outcomes by July 2012)	<ul style="list-style-type: none"> Employers expressing interest Positions being recruited for Job outcomes 	<ul style="list-style-type: none"> 121 23 5 	Launched January 2011.
DWP Work Programme		<ul style="list-style-type: none"> Positive progressions 		Programme starts summer 2011
Glasgow Works Employability Programme	5370 (target 4439)	<ul style="list-style-type: none"> Into work 	<ul style="list-style-type: none"> 1113 	For period to 31 March 2011
Integrated Employment and Skills (IES)	364	<ul style="list-style-type: none"> Positive progressions 	<ul style="list-style-type: none"> 234 	For period September to December 2010

Section 1

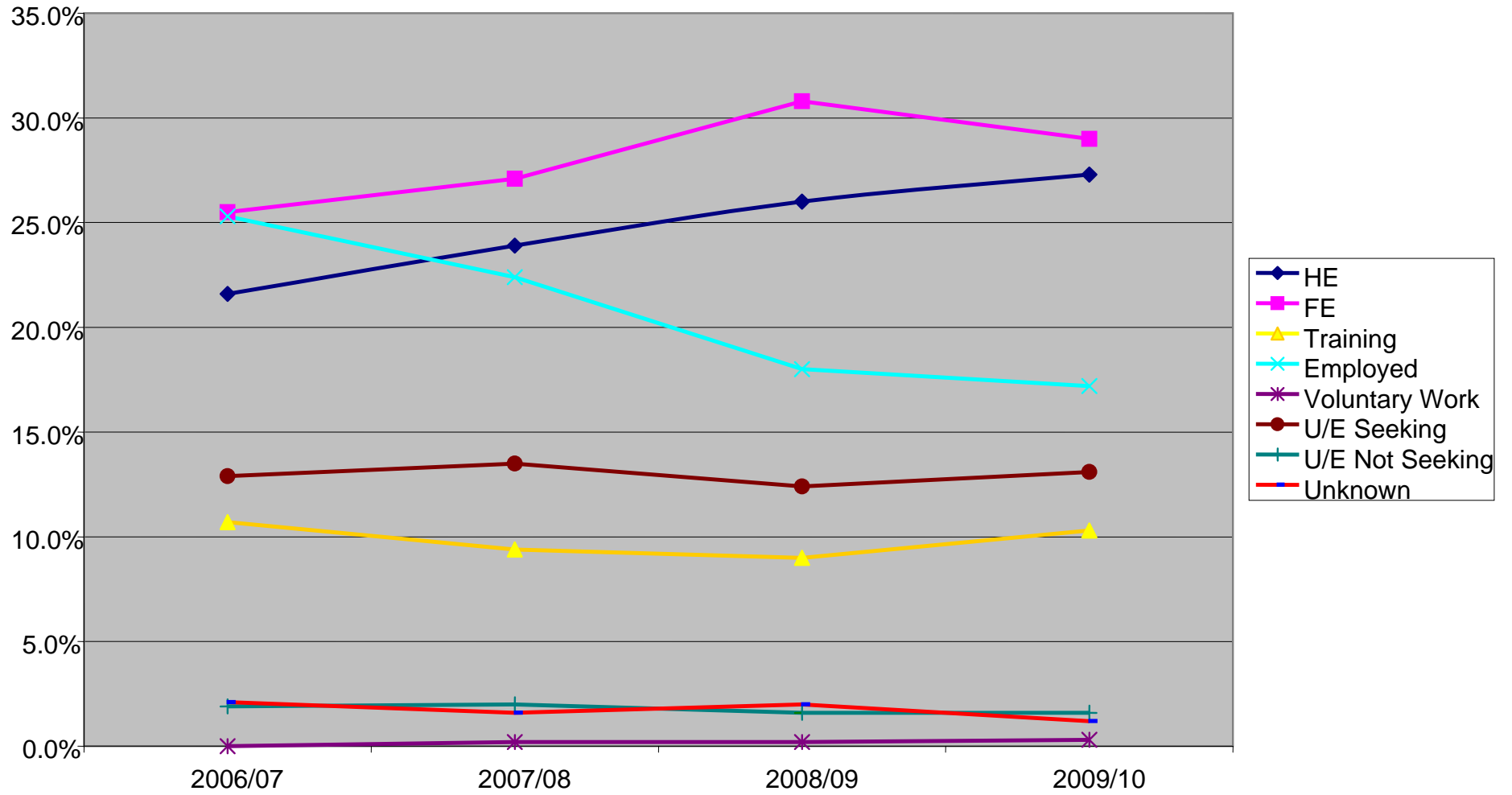
Intervention/Initiative	Numbers Engaged	Quantitative Measures	Current Figures	Commentary
Inspiring Scotland Ventures	1475	<ul style="list-style-type: none"> • Soft outcomes • Progression milestones • Positive destinations 	<ul style="list-style-type: none"> • 2170 • 632 • 631 	For the period January 2010 – October 2010
Schools Vocational programmes (14-16 year olds) mainstream	1023 (target 1090)	<ul style="list-style-type: none"> • Completed programme • Attained award 		Session Aug 2010 – June 2011 From SOA (6.1.3)
* Schools Supported Vocational Programmes (SVP) ¹	357	<ul style="list-style-type: none"> • Completed programme • Attained award 		Session Aug 2010 – June 2011
* Schools Enhanced Vocational Inclusion Programmes (EVIP) ²	158	<ul style="list-style-type: none"> • Completed programme • Attained award 		Session Aug 2010 – June 2011
SDS Key Work Service	1722	<ul style="list-style-type: none"> • Positive progressions 	<ul style="list-style-type: none"> • 780 	April 2010 to March 2011
Youth Gateway		<ul style="list-style-type: none"> • Positive destinations 		Future funding
Youth Jobs Fund	7	<ul style="list-style-type: none"> • Into work 		Project start date March 2011

¹ Schools Supported Vocational Programme (SVP) is offered to pupils attending any of Glasgow's Additional Support for Learning (ASL) schools, Complex Learning Needs schools or some Communication Disorder Units within mainstream schools.

² Enhanced Vocational Inclusion Programme (EVIP) offers young people who are disengaged from mainstream education the opportunity to study vocational qualifications in a college/workplace environment. Young people can be referred to the programme from a variety of agencies including School, Social Work Services and Educational Psychology and should be "looked after" in some way by the local authority

Section 1

Table 3: Statistical trends: School Leaver Destinations



Section 1

Table 3: Statistical Trends: School Leaver Destinations

Glasgow Figures

	HE	FE	Training	Employed	Vol Work	U/E Seeking	U/E Not Seeking	Unknown	Total	+ve	-ve
2009/10	1322	1405	497	831	16	636	76	58	4,841	4,071	770
2008/09	1334	1580	463	925	8	638	83	104	5,135	4,310	825
2007/08	1274	1443	498	1192	0	718	108	87	5,320	4,407	913
2006/07	1101	1300	544	1290	0	656	98	108	5,097	4,235	862

Glasgow Percentages

	HE	FE	Training	Employed	Vol Work	U/E Seeking	U/E Not Seeking	Unknown	Total	% +ve	% -ve
2009/10	27.3%	29.0%	10.1%	17.2%	0.3%	13.1%	1.6%	1.2%	100%	84.1%	15.9%
2008/09	26.0%	30.8%	9.0%	18.0%	0.2%	12.4%	1.6%	2.0%	100%	83.9%	16.1%
2007/08	23.9%	27.1%	9.4%	22.4%	0.2%	13.5%	2.0%	1.6%	100%	82.8%	17.2%
2006/07	21.6%	25.5%	10.7%	25.3%	***	12.9%	1.9%	2.1%	100%	83.1%	16.9%

Scottish Figures

* Scottish Percentages may not total 100% due to rounding

	HE	FE	Training	Employed	Vol Work	U/E Seeking	U/E Not Seeking	Unknown	Total	% +ve	% -ve
2009/10	35.7%	27.1%	5.2%	18.5%	0.3%	11.3%	1.3%	0.6%	54,097	86.8%	13.2%
2008/09	34.9%	27.0%	5.1%	18.4%	0.2%	11.5%	1.6%	1.2%	53,532	85.7%	14.3%
2007/08	31.1%	24.8%	4.9%	25.4%	0.2%	10.9%	1.5%	1.1%	58,714	86.4%	13.5%
2006/07	29.7%	23.3%	5.1%	28.6%	***	10.8%	1.2%	1.4%	57,364	86.6%	13.4%

Note: Glasgow figures exclude Jordanhill School: whereas Scottish figures include Jordanhill

*** Voluntary work included under Unemployed Seeking prior to 2007/08 reporting

Section 1

Table 4: 16-19 Year Old Quarterly JSA Claimant Figures March 2009 – March 2011

Area	March 2009	June 2009	September 2009	December 2009	March 2010	June 2010	September 2010	December 2010	March 2011
West									
Anniesland	145	165	135	160	170	175	145	135	160
Drumchapel	90	105	110	95	90	95	85	85	95
Partick	120	150	120	110	140	135	135	120	115
West Total	355	420	365	365	400	405	365	340	370
% Diff from Previous Quarter		15.5	-15.1	0.0	8.8	1.2	-11.0	-7.4	8.1
% Diff from Previous Year					11.3	-3.7	0.0	-7.4	-8.1

Area	March 2009	June 2009	September 2009	December 2009	March 2010	June 2010	September 2010	December 2010	March 2011
East									
Bridgeton	55	50	50	50	55	55	40	50	50
Easterhouse	170	185	180	170	160	170	140	130	135
Parkhead	240	250	215	200	205	200	195	200	195
Shettleston	125	165	170	155	165	180	175	150	190
East Total	590	650	615	575	585	605	550	530	570
% Diff from Previous Quarter		9.2	-5.7	-7.0	1.7	3.3	-10.0	-3.8	7.0
% Diff from Previous Year					-0.9	-7.4	-11.8	-8.5	-2.6

Area	March 2009	June 2009	September 2009	December 2009	March 2010	June 2010	September 2010	December 2010	March 2011
South East									
Castlemilk	85	85	80	75	105	105	95	105	110
Shawlands	210	210	240	205	240	250	260	215	230
Langside	80	75	100	95	115	95	115	100	110
Lauriston	95	130	130	125	135	140	130	120	115
SE Total	470	500	550	500	595	590	600	540	565
% Diff from Previous Quarter		6.0	9.1	-10.0	16.0	-0.8	1.7	-11.1	4.4
% Diff from Previous Year					21.0	15.3	8.3	7.4	-5.3

Section 1

Area	March 2009	June 2009	September 2009	December 2009	March 2010	June 2010	September 2010	December 2010	March 2011
South West									
Govan	285	270	285	270	275	285	245	210	255
Hillington	0	0	0	0	0	0	0	0	0
SW Total	285	270	285	270	275	285	245	210	255
% Diff from Previous Quarter		-5.6	5.3	-5.6	1.8	3.5	-16.3	-16.7	17.6
% Diff from Previous Year					-3.6	5.3	-16.3	-28.6	-7.8

Area	March 2009	June 2009	September 2009	December 2009	March 2010	June 2010	September 2010	December 2010	March 2011
North									
Maryhill	135	145	160	150	155	150	140	135	155
Springburn	320	340	325	315	340	325	275	270	320
North Total	455	485	485	465	495	475	415	405	475
% Diff from Previous Quarter		6.2	0.0	-4.3	6.1	-4.2	-14.5	-2.5	14.7
% Diff from Previous Year					8.1	-2.1	-16.9	-14.8	-4.2

	March 2009	June 2009	September 2009	December 2009	March 2010	June 2010	September 2010	December 2010	March 2011
Citywide Total	2,155	2,325	2,300	2,175	2,350	2,360	2,175	2,025	2,235
% Diff from Previous Quarter		7.3	-1.1	-5.7	7.4	0.4	-8.5	-7.4	9.4
% Diff from Previous Year					8.3	1.5	-5.7	-7.4	-5.1

Section 2

MCMC Partnership Action Plan

Objective	Action	Lead	NEET Prev ³	NEET Red ⁴	LAC ⁵	ASN ⁶	Timescale
1 Data Sharing: To ensure the employment of consistent data-sharing practice across all relevant partners in Glasgow.	1.1 To direct and monitor the development and implementation of relevant data sharing agreements and practice between partners in order to populate the SDS Data Hub; key agencies to include:- <i>Glasgow Works & Glasgow's Regeneration Agency, Glasgow Life, GCC Education, GCC SWS, GCVS and Inspiring Scotland.</i>	SDS	X	X	X	X	From May 2011
2 Early Identification: To identify those at risk; the nature of the risk; and the agencies/key workers best placed to work with individuals	2.1 To direct and monitor the implementation of the 'Risk Matrix' across Glasgow schools	16+ Team	X		X	X	August 2011
	2.2 To oversee the development and implementation of a comprehensive staged intervention model – outlining key agency roles and responsibilities - for all young people within MCMC Target Groups across the city	Glasgow Works	X	X	X	X	From July 2011
	2.3 To ensure the comprehensive staged intervention model fully addresses the needs of young people for whom the transitions from school may be particularly challenging (eg young carers; young parents; people with a disability, LAC/LAAC, people from a black or minority ethnic background)	Glasgow Works	X	X	X	X	From July 2011

³ NEET Prevention Target Group:

⁴ NEET Reduction Target Group:

⁵ LAC/LAAC Target Group:

⁶ ASN Target Group:

15-16 year olds reaching their school leaving date who are at risk of not making a successful transition from school

16-19 year olds who are not in education, employment or training.

Young people who are, or have been, Looked After or Looked After and Accommodated

Young people identified as needing Additional Support for Learning

Section 2

Objective	Action	Lead	NEET Prev	NEET Red	LAC	ASN	Timescale
3 Provision: To Identify and/or develop appropriate and effective interventions and activities which will enable young people to move closer to the labour market.	3.1 To populate and finalise 'Activity Indicators' across partners as a contribution towards Glasgow's overall MCMC offer	Glasgow Works	X	x	X	X	Completed
	3.2 To link with YEG structures to identify gaps in provision and identify partnership approaches and appropriate funding streams to develop corresponding services.	MCMC Partnership	X	X	X	X	Ongoing
	3.3 To provide recommendations supported by statistical trends and analysis to influence the development of FE Provision and National Training Programme provision in the city	MCMC Partnership supported by 16+ Team	X	X	X	X	Annually
4 Transitions: To ensure the provision of flexible and effective supports for transition into suitable employment, education, training or First Step activities	4.1 To ensure the development and implementation of an effective MCMC partnership support structure within every secondary school in the city	16+ Team	X		X	X	From August 2011
	4.2 To review and ensure the continued provision of suitable transition support for young people who require MCMC; including the continuation and co-ordination of the Activity Agreement programme, SDS Key Work Support and the GRA Youth Gateway team	16+ Team / SDS / GRA	X	X	X	X	From August 2011

Section 2

Objective	Action	Lead	NEET Prev	NEET Red	LAC	ASN	Timescale
5 Retention and progression: To maximise retention rates for young people in positive destinations	5.1 To oversee and monitor the implementation and delivery of consistent early identification and support services to vulnerable young people entering Further Education	WoSCoP		X	X	X	April 11 and ongoing
	5.2 To oversee and monitor the implementation and delivery of consistent early identification and support services to vulnerable young people on national training programmes	SDS		X	X	X	April 11 and ongoing
6 Employer Engagement: To ensure that MCMC service developments and priorities reflect identified employer needs, skills gaps and local labour market information	6.1 To identify key data sets and subsequently monitor and analyse up to date Labour Market Analysis reports	SDS/JC+	X	X	X	X	April 11 and ongoing
	6.2 To increase uptake of Commonwealth Apprenticeship initiative / Commonwealth Jobs Fund	Glasgow Works	X	X	X	X	From Feb 2011
	6.3 To promote Targeted Pathways to Apprenticeships (TPA) through case management of unemployed young people	SDS		X	X	X	Ongoing
7 Monitoring and Reporting Progress: To incorporate reflective practice and formal reporting mechanisms to evaluate the effectiveness of the Partnership and city-wide YEG Structures and Strategies	7.1 To provide six monthly progress reports to the Community Planning Partnership on the progress of the MCMC Partnership	Glasgow Works	X	X	X	X	April and Sept Ongoing
	7.2 To establish a quarterly reporting mechanism for the YEGs to inform the Partnership of local progress	Glasgow Works	X	X	X	X	April 11 and ongoing
	7.3 To monitor quarterly YEG Progress reports and provide supports and identify resources as appropriate	MCMC Partnership	X	X	X	X	April 11 and ongoing